

**Brightspace  
Student Guide  
to  
Plagiarism  
Prevention**

[www.ouriginal.com](http://www.ouriginal.com)





# How Ouriginal works



- The process begins when a student submits their document to an assignment in Brightspace.
- The document is then analyzed by Ouriginal for matching content through our extensive content resources.
- Any matching content is then further analyzed and categorized by content source.
- When the analysis is complete, an Ouriginal Similarity Report is generated and sent to the teacher within the Brightspace assignment.
- The teacher then interprets the report's analysis and findings..



# Useful information to get started with Ouriginal

- Multiple attempts, or submissions, to an assignment can be a great way for you and your teacher to begin a discussion on what is, and what is not, plagiarism.
- These documents will not be matched against themselves – meaning you will not ‘self-plagiarize’ against previous versions of your document within the same assignment.





# Ouriginal in your Brightspace assignments

Inside your Brightspace course:

1. Select the Urkund/Ouriginal icon in your Navbar
2. Select which assignment you want to view the Ouriginal Similarity Report
3. Select 'Hide Details'
4. Select the three horizontal lines next to the document
5. Select 'View Report' – Ouriginal Similarity Report will open in a new tab.

The screenshot shows the Brightspace course interface for 'urkund Course 3'. The navbar includes icons for Content, Urkund (highlighted with a yellow box and '1'), Assignments, Discussions, Quizzes, Classlist, Grades, and Class Progress. Below the navbar, the section 'Assignments Analyzed for Plagiarism' is shown. A table lists assignments with columns for Document Name, Status, Significance Score, and Last Updated. The 'Neuro Assignment' (Jun 19, 2020 2:46 PM) is highlighted with a yellow box and '2', showing a 100.00% similarity score. Below it, the 'Hide Details [-1]' button is highlighted with a yellow box and '3'. The 'Urkund Terminology.docx' document is highlighted with a yellow box and '4', and its 'View Report' button is highlighted with a yellow box and '5'. The 'View Report' button is a blue link that opens the Ouriginal Similarity Report in a new tab.

Document Name	Status	Significance Score	Last Updated
Neuro Assignment Jun 19, 2020 2:46 PM	100.00% similarity		
Urkund Terminology.docx	Analyzed	100.00%	Jun 19, 2020 2:46 PM
int Psych 101 doc.docx	Analyzed	100.00%	May 5, 2020 10:10 PM

# OVERVIEW



## Ouriginal Similarity Report

**Ouriginal**

**ANALYSIS OVERVIEW**

13 PAGES OUT OF 26 TOTAL CONTAIN FINDINGS

**Document Overview Bar**  
Visualisation of all findings

**Quick Options**  
Reset the report to its original state, download it as a pdf-file or access this help-guide

**Findings**  
Navigation to the findings view or the entire document

**Similarity**  
Text similarity percentage

**Submission Details**  
Info about submitted file

**FINDINGS**

- 27 **MATCHING TEXT**  
High similarity of content
- 6 **WARNINGS**  
Unusual use of characters

**VIEW THE ENTIRE DOCUMENT**

**SIMILARITY**

66%  
this assignment

20%  
receiver's average

**PRO TIPS**  
Seeing a score of 66% is not a proof of plagiarism: there could be several reasons why a score is high.  
**LEARN MORE**

**Pro Tips**  
Tips to help interpret the analysis

**SUBMISSION DETAILS**

SUBMITTER  
Information URKUND

FILE  
Critical\_Summary\_Of\_Moby\_Dick.pdf

SUBMITTED ON  
2018-02-22 T11:28:00

SUBMISSION ID  
35826004

WORD COUNT  
1166

MESSAGE  
Dear Prof. Here is my paper.  
With best regards, Marie

# View of matched content

# Matched content by source type

**Side-by-side box**  
Submitted text vs matching text

The text matches are shown with the submitted student text to the left and the text from the matching source to the right. The percentage refers to the text-similarity for this specific block of text.

**90% MATCHING TEXT**

I want to emphasize one particular aspect of multilingual language users' social interaction which is its multimodal and multisensory nature. I elaborate on two related concepts: Translanguaging Space and Translanguaging Instinct, to underscore the necessity to bridge the artificial and ideological divides between the so-called sociocultural and the cognitive approaches to Translanguaging practices. In doing so, I respond to some of the criticisms and confusions about the notion of Translanguaging.

One particular aspect of multilingual language users' social interaction that I want to emphasize is its multimodal and multisensory nature. I elaborate on two related concepts: Translanguaging Space and Translanguaging Instinct, to underscore the necessity to bridge the artificial and ideological divides between the so-called sociocultural and the cognitive approaches to Translanguaging practices. In doing so, I respond to some of the criticisms and confusions about the notion of Translanguaging.

Wikipedia.com  
Fetched: 2018-05-01 T17:06:00  
Url: <https://en.wikipedia.org/wiki/Language>  
+3 ALTERNATIVE SOURCES

**Source Legend**  
Type of source

These icons tell you what type of source is referred to. W = website, SA = student assignments (documents previously submitted to Ouriginal are stored in our archives) and J = journal.

**SOURCE LIST**

SIMILARITY	TYPE	SOURCE NAME	+	+	+
98%	J	"Correlation or causality - a qualitative investigation of Author: McPherson, James Publisher: ScienceDirect by Elsevier Publication date: 27 03 2018 Identifiers: 123456 Keywords: correlation, causality, qualitative, smoking, career			
87%	SA	Assignment_1-MF2085.docx Submitted by: Hanna Thorwid (hthorwid@kth.se) Receiver: Simon Forsberg (simon@analys.orkund.com) Submission date: 02.04.2019 10:17:45+1 Identifiers: 654321 Keywords:	+5	5	
77%	W	Benefits & risks with artificial intelligence - Future of Life Institute url: <a href="https://futureoflife.org/background/benefits-risks-of-artificial-intelligence/">https://futureoflife.org/background/benefits-risks-of-artificial-intelligence/</a> Author: Tegmark, Max Last edited: 2018 Identifiers: Keywords:	+5	4	

**REALISED THAT THERE'S A SOURCE MISSING FROM THE LIST?**

Place the URL of the missing undetected source  **REPORT**



# Matching Content Source by Type

## School

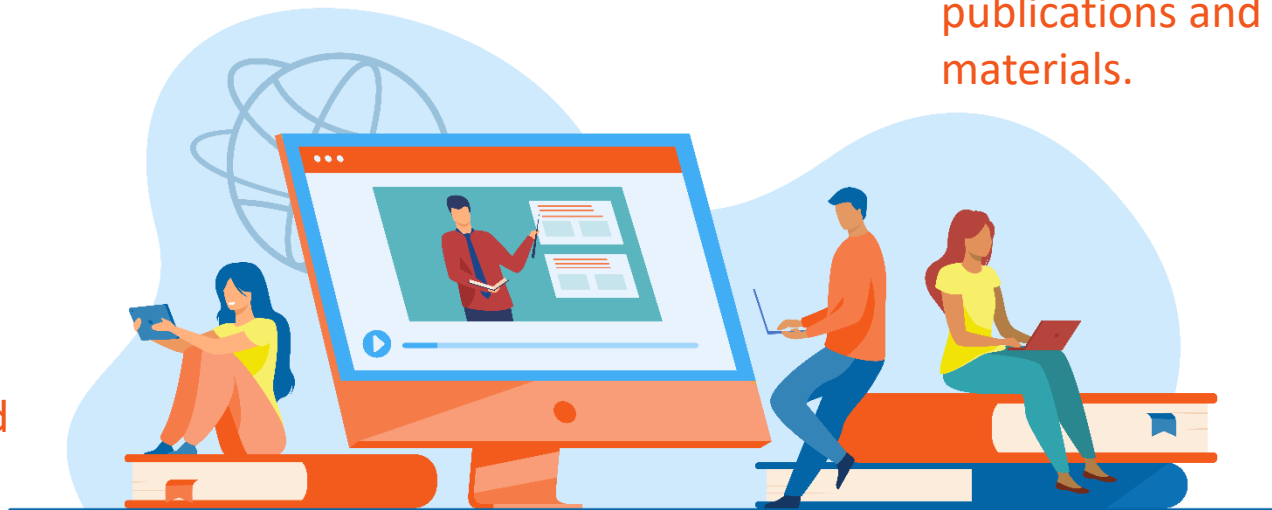
### Assignment –

any student content previously submitted to the Ouriginal database.

**Journal** – content sourced from academic journals, scholarly publications and bibliographic materials.

## Website –

content sourced from the internet.





# Ouriginal

[www.ouriginal.com](http://www.ouriginal.com)